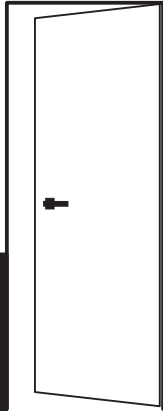


PORTA MYA

MYA Door
Puerta MYA



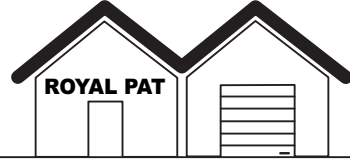
ISTRUZIONI DI MONTAGGIO

Installation instructions
instrucciones de montaje

Cod. IS.MYA 01-IT-EN-ES



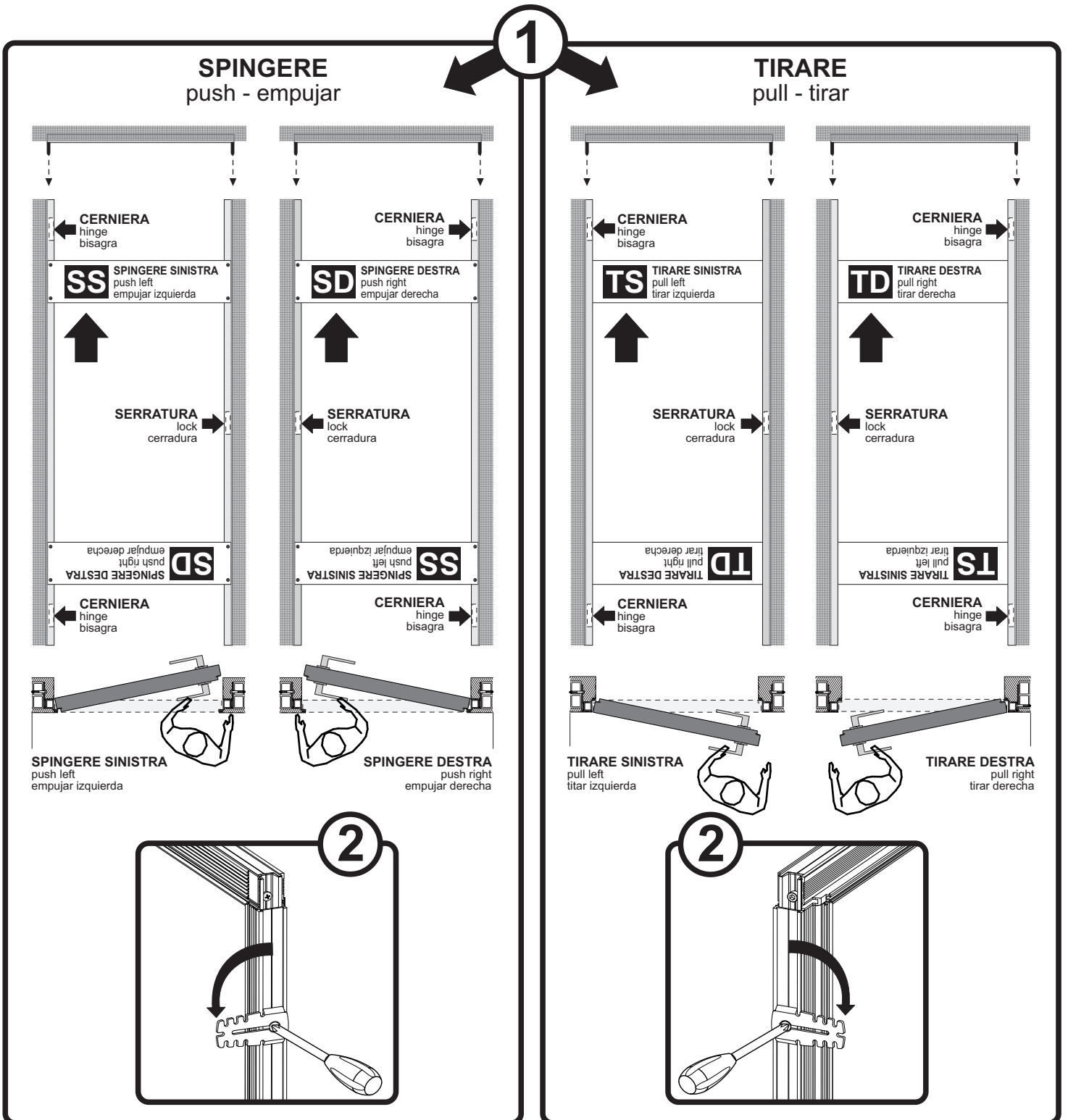
TELAIO
frame
marco



Tel. +39 0734 628303
Fax. +39 0734 628201

www.royalpat.it
info@royalpat.it

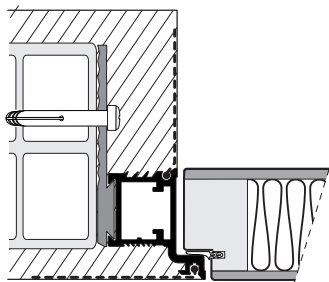
SCelta VERSO DI APERTURA - opening direction choice - elección sentido de apertura



APPLICAZIONI - Applications - Aplicaciones

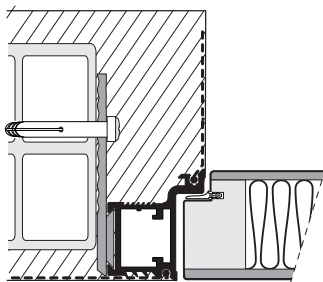
SU MURATURA

on a brick wall - con revoque



APERTURA SPINGERE

push opening
apertura empujar

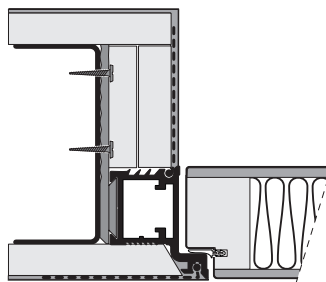


APERTURA TIRARE

pull opening
apertura tirar

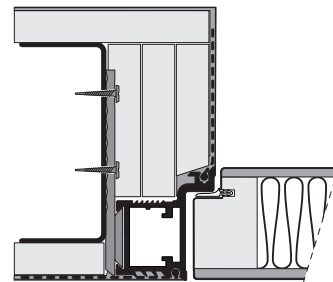
SU CARTONGESSO

on plasterboard - con cartón yeso



APERTURA SPINGERE

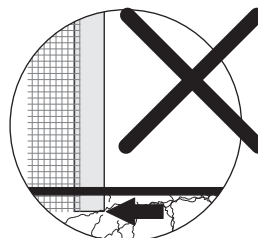
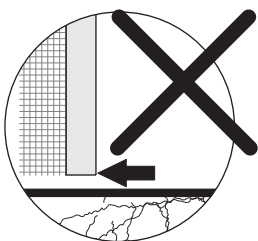
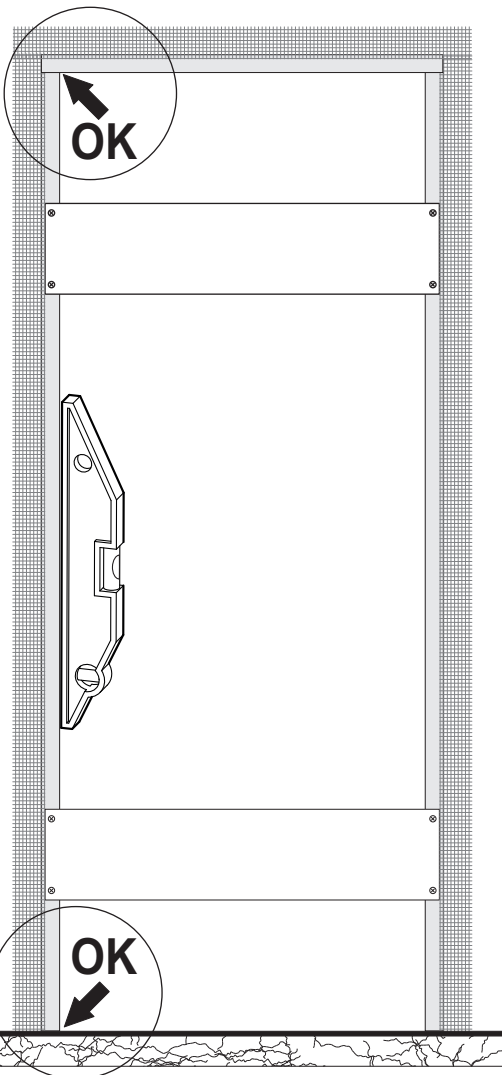
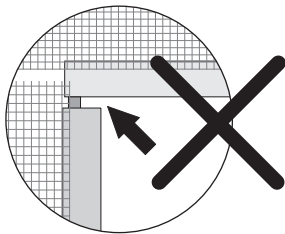
push opening
apertura empujar



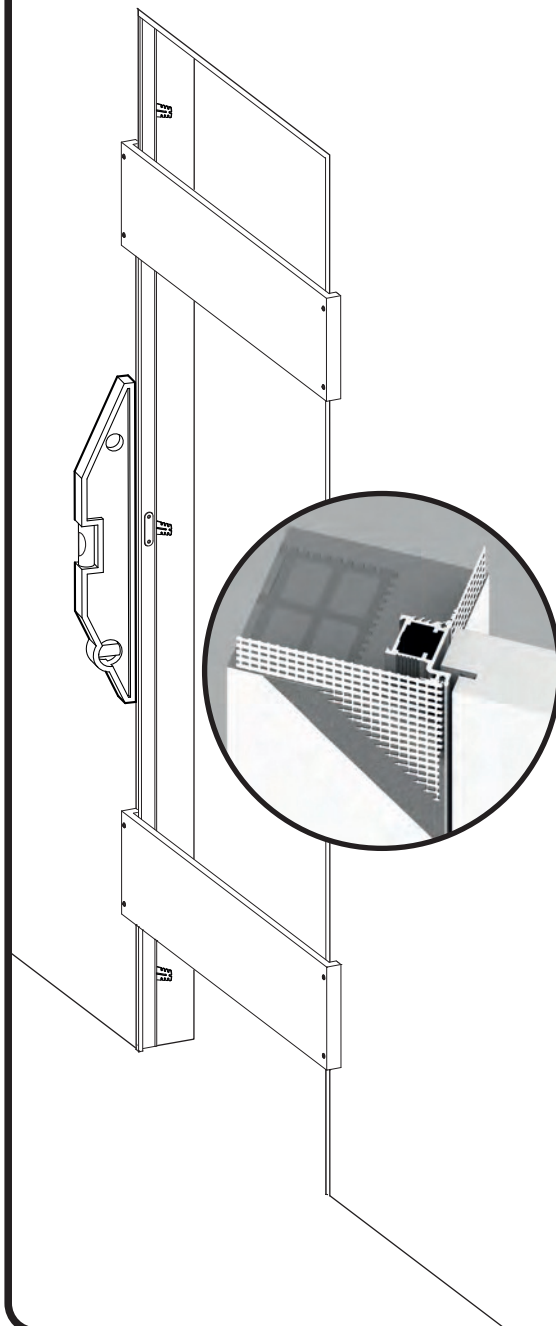
APERTURA TIRARE

pull opening
apertura tirar

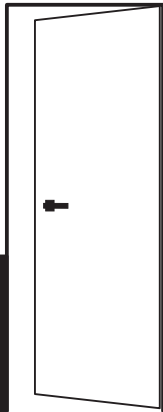
3



4



PORTA MYA
MYA Door
Puerta MYA



ISTRUZIONI DI MONTAGGIO

Installation instructions
instrucciones de montaje

Cod. IS.MYA 02-IT-EN-ES



ANTA
panel
hoja



ROYAL PAT
Solutions for your home



Tel. +39 0734 628303
Fax. +39 0734 628201

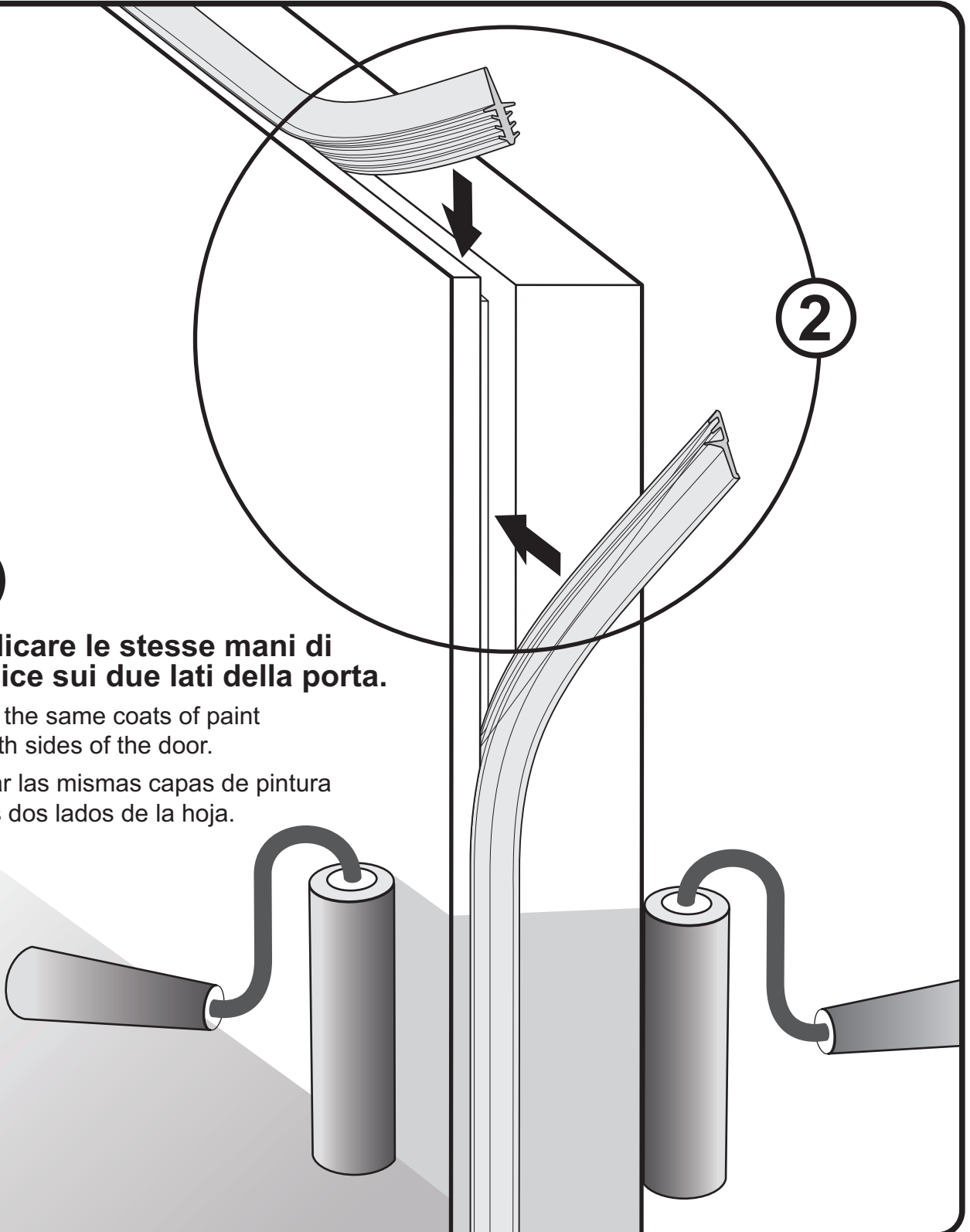
www.royalpat.it
info@royalpat.it

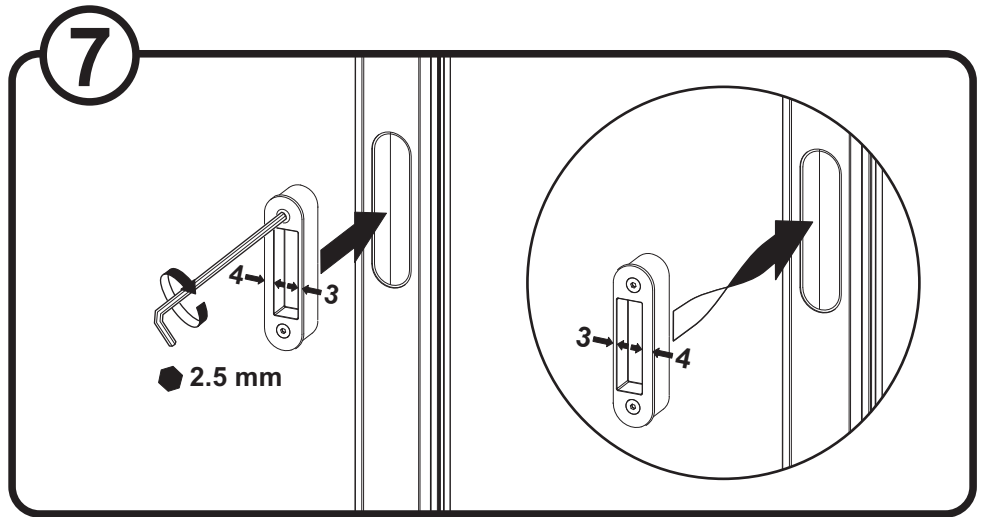
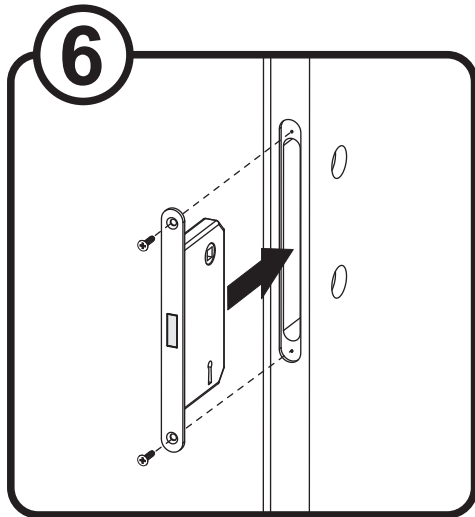
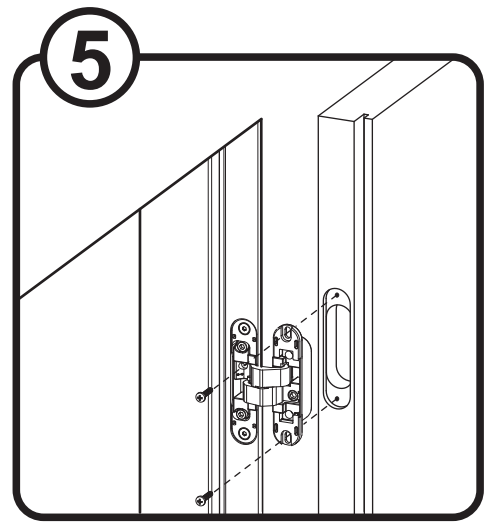
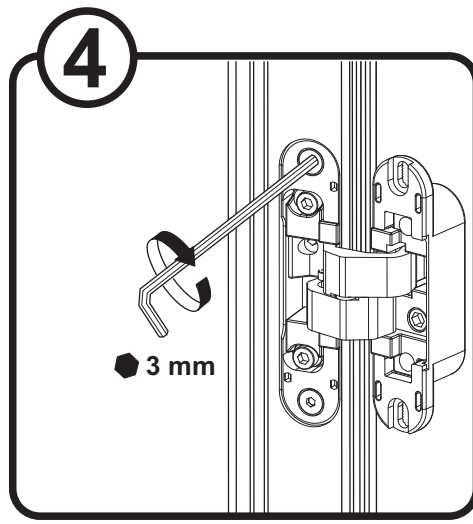
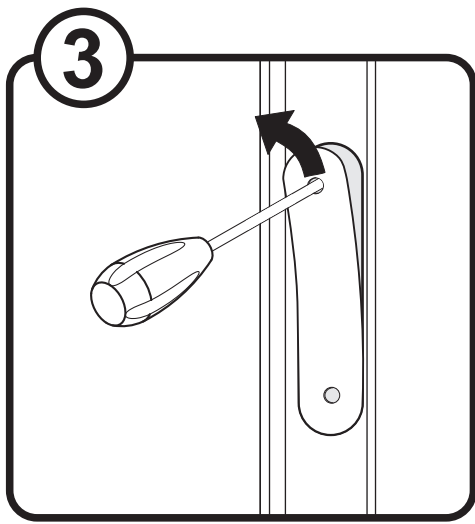
1

Applicare le stesse mani di vernice sui due lati della porta.

Apply the same coats of paint on both sides of the door.

Aplicar las mismas capas de pintura en los dos lados de la hoja.





8 REGOLAZIONI - adjustments - ajustes

TELAIIO - frame - marco

ANTA - panel - hoja

A - Foro viti di fissaggio della cerniera allo stipite.
Hole for hinge fixing on the jamb.
Fijación de la bisagra al marco.

B - Asole di regolazione verticale e fissaggio anta.
Buttonholes for vertical adjustment and door fixing.
Coliso de ajuste vertical y fijación a la hoja.

C - Vite di bloccaggio regolazione in profondità.
Fixing screw of depth adjustment.
Tornillo de bloqueo ajuste, en profundidad.

D - Vite autobloccante per regolazione laterale.
Self stop screw for lateral adjustment.
Tornillo autobloccante para ajuste lateral.

E - Eccentrico per la regolazione in profondità.
Excentric system for depth adjustment.
Excéntrico para ajuste en profundidad.

